

**DNAJA1 Antibody (C-term)**  
**Purified Rabbit Polyclonal Antibody (Pab)**  
**Catalog # AP20747c****Specification**

---

**DNAJA1 Antibody (C-term) - Product Information**

Application	WB,E
Primary Accession	<a href="#">P31689</a>
Other Accession	<a href="#">P63036</a> , <a href="#">P63037</a> , <a href="#">Q5E954</a>
Reactivity	Human, Mouse, Rat
Predicted	Bovine
Host	Rabbit
Clonality	Polyclonal
Isotype	Rabbit IgG
Calculated MW	44868

**DNAJA1 Antibody (C-term) - Additional Information****Gene ID** 3301**Other Names**

DnaJ homolog subfamily A member 1, DnaJ protein homolog 2, HSDJ, Heat shock 40 kDa protein 4, Heat shock protein J2, HSJ-2, Human DnaJ protein 2, hDj-2, DNAJA1, DNAJ2, HDJ2, HSJ2, HSPF4

**Target/Specificity**

This DNAJA1 antibody is generated from a rabbit immunized with a KLH conjugated synthetic peptide between 379-414 amino acids from the C-terminal region of human DNAJA1.

**Dilution**

WB~~1:1000

E~~Use at an assay dependent concentration.

**Format**

Purified polyclonal antibody supplied in PBS with 0.09% (W/V) sodium azide. This antibody is purified through a protein A column, followed by peptide affinity purification.

**Storage**

Maintain refrigerated at 2-8°C for up to 2 weeks. For long term storage store at -20°C in small aliquots to prevent freeze-thaw cycles.

**Precautions**

DNAJA1 Antibody (C-term) is for research use only and not for use in diagnostic or therapeutic procedures.

**DNAJA1 Antibody (C-term) - Protein Information****Name** DNAJA1

**Synonyms** DNAJ2, HDJ2, HSJ2, HSPF4

**Function** Co-chaperone for HSPA8/Hsc70 (PubMed:[10816573](#)). Stimulates ATP hydrolysis, but not the folding of unfolded proteins mediated by HSPA1A (in vitro) (PubMed:[24318877](#)). Plays a role in protein transport into mitochondria via its role as co-chaperone. Functions as a co-chaperone for HSPA1B and negatively regulates the translocation of BAX from the cytosol to mitochondria in response to cellular stress, thereby protecting cells against apoptosis (PubMed:[14752510](#)). Promotes apoptosis in response to cellular stress mediated by exposure to anisomycin or UV (PubMed:[24512202](#)).

#### Cellular Location

Membrane; Lipid- anchor. Cytoplasm. Microsome. Nucleus. Cytoplasm, perinuclear region. Mitochondrion Note=Primarily associated with microsomes. A minor proportion is associated with mitochondria (By similarity). Primarily cytoplasmic. A minor proportion is associated with nuclei.

#### Tissue Location

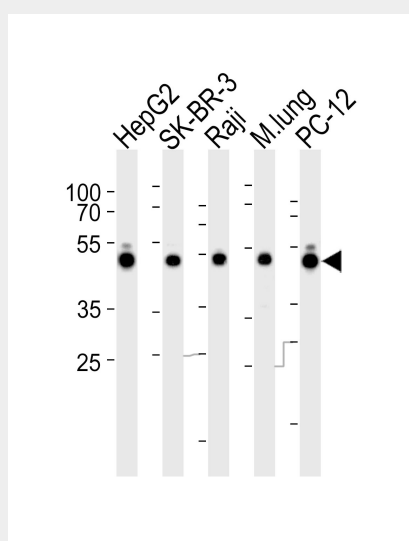
Ubiquitous. Isoform 2 is highly expressed in testis and lung, but detected at low levels in thymus, prostate, colon and liver.

#### DNAJA1 Antibody (C-term) - Protocols

Provided below are standard protocols that you may find useful for product applications.

- [Western Blot](#)
- [Blocking Peptides](#)
- [Dot Blot](#)
- [Immunohistochemistry](#)
- [Immunofluorescence](#)
- [Immunoprecipitation](#)
- [Flow Cytometry](#)
- [Cell Culture](#)

#### DNAJA1 Antibody (C-term) - Images



Western blot analysis of lysates from HepG2, SK-BR-3, Raji cell line, mouse lung tissue lysate and rat PC-12 cell line (from left to right), using DNAJA1 Antibody (C-term)(Cat. #AP20747c). AP20747c was diluted at 1:1000 at each lane. A goat anti-rabbit IgG H&L(HRP) at 1:5000 dilution was used

as the secondary antibody. Lysates at 35ug per lane.

#### **DNAJA1 Antibody (C-term) - Background**

Co-chaperone of Hsc70. Seems to play a role in protein import into mitochondria.

#### **DNAJA1 Antibody (C-term) - References**

Oh S.,et al.Biochim. Biophys. Acta 1174:114-116(1993).  
Chellaiah A.,et al.Biochim. Biophys. Acta 1174:111-113(1993).  
Hu Y.,et al.Int. J. Androl. 27:343-349(2004).  
Kalnine N.,et al.Submitted (MAY-2003) to the EMBL/GenBank/DDBJ databases.  
Ota T.,et al.Nat. Genet. 36:40-45(2004).